

## Installing USB driver on Windows Vista & 7 & 8 & 8.1 & 10 (32/64bit)

This is written about the installation method for the SHOT & HIT –series USB driver (**Windows Vista 32/64-bit version** and **Windows 7 32/64-bit version** and **Windows 8 & 8.1 32/64-bit version** and **Windows 10 32/64-bit version**) Please install USB driver in the following procedure.

1. Turn on the Stage-Controller and set the **MemorySwitch** into “**USB**” .

※Refer to the manual of the Stage-Controller by which use is carried out for details, such as a MemorySwitch setup.

In case of SHOT, Set “**HOST**” mode.

2. Connect the personal computer with a Stage-Controller by the USB cable.

If show the “**Found New Hardware Wizard**”, Click the “**Cancel**” button.

※Although a first half [ of the 2nd inning ] message may be shown by the personal computer, please cancel twice.



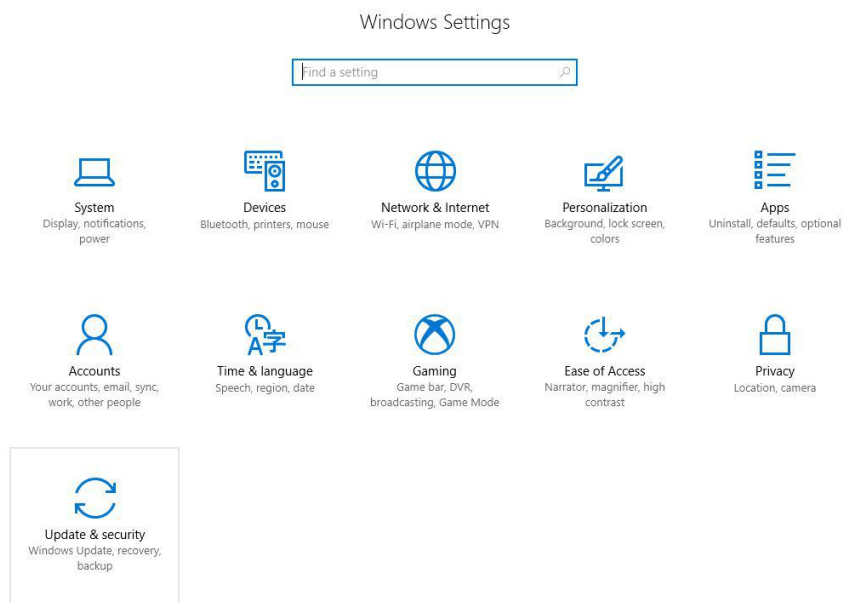
3. In use of Windows10 to 3. , in the use of Windows 8&8.1 to 4. , In use of Windows7 & WindowsVista, please move on to 5.

### 3. In use of **Windows10**

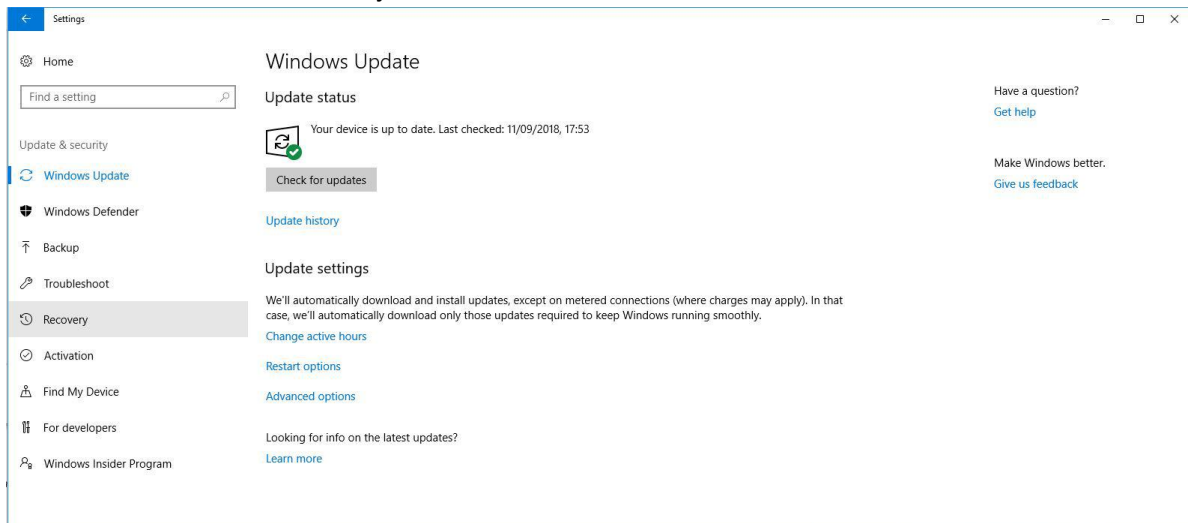
3. 1 Please choose " setup" from a menu.



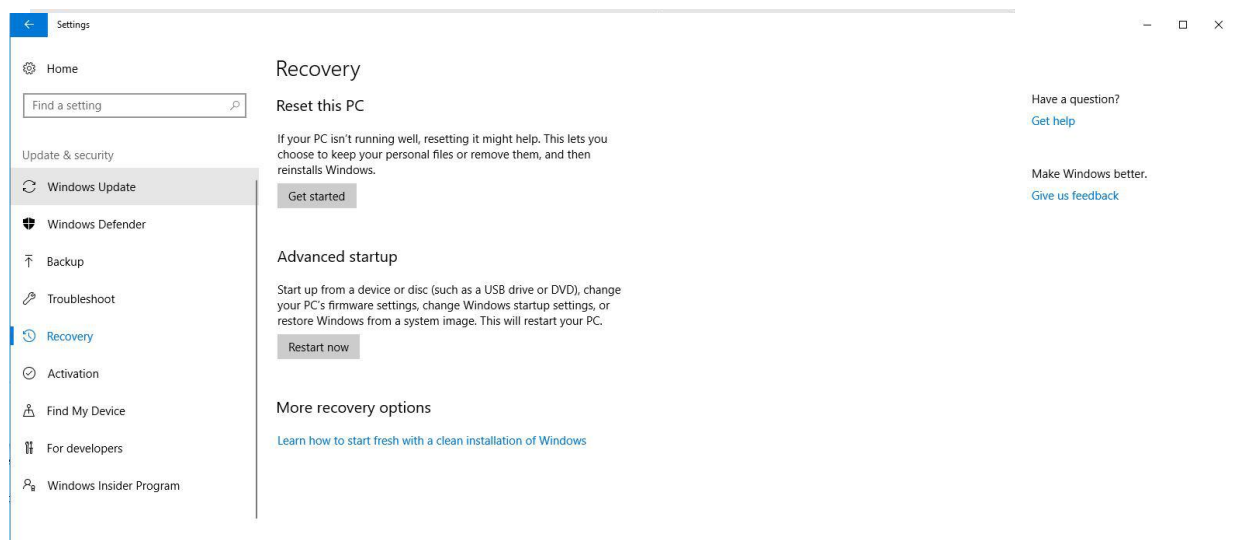
3. 2 Please choose "Update and Security."



### 3. 3 Please choose "Recovery."



### 3. 4 Please choose "Reboots immediately"



Please move on to 4. 3.

#### 4. In use of Windows8 & 8.1

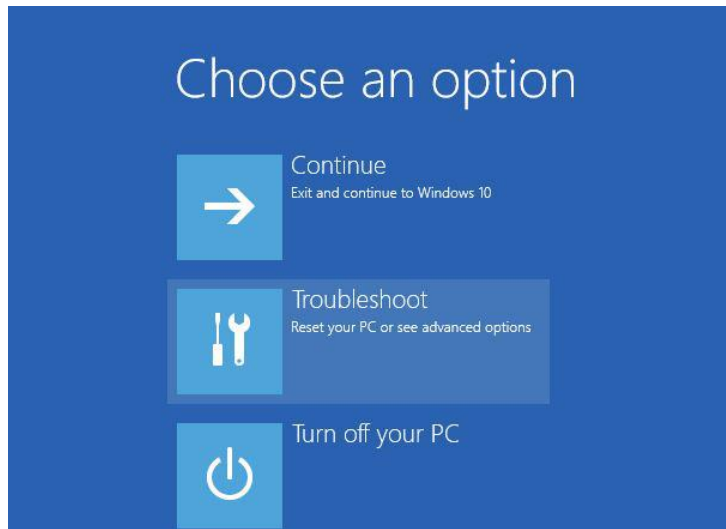
4. 1 Please display the charm-bar at the right end of a screen, and choose "Setup."



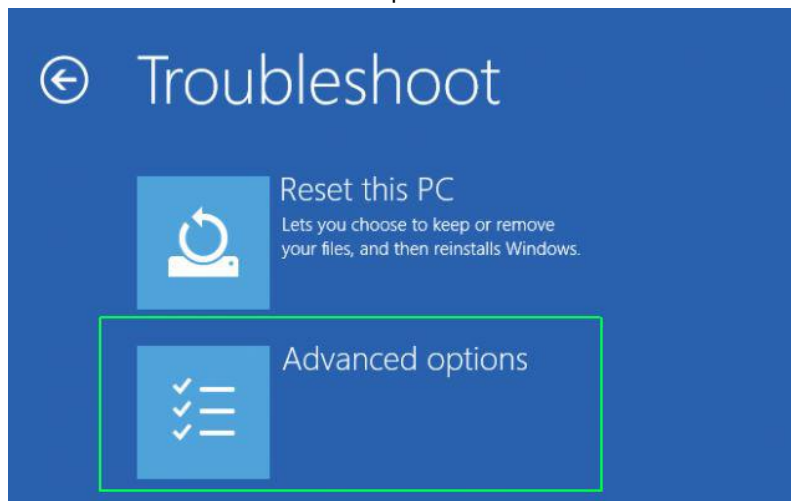
4. 2 Please choose "Reboot", pushing the "Shift-key" of a keyboard.



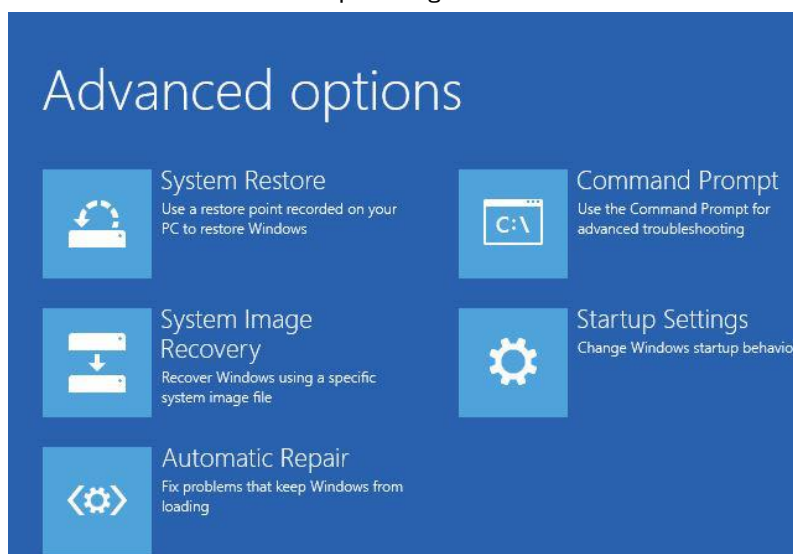
4. 3 Please choose "Troubleshooting."



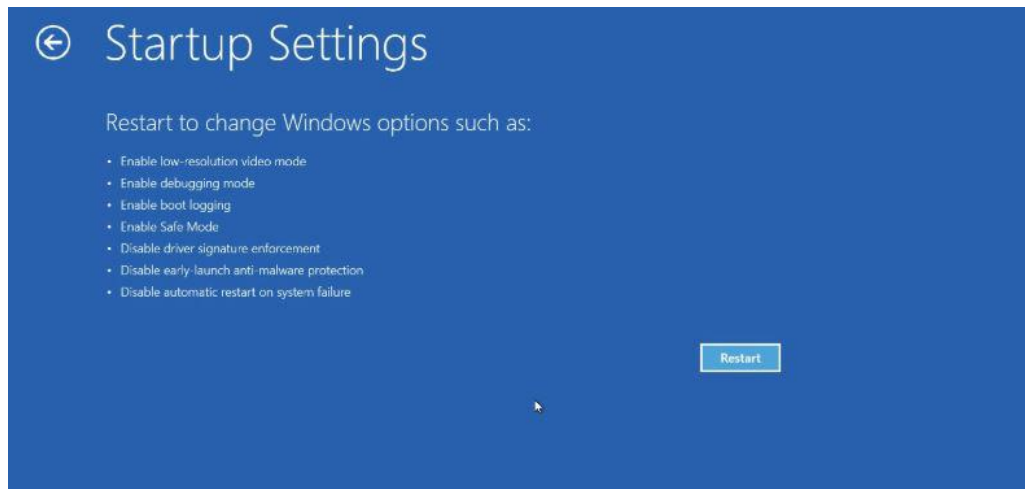
4. 4 Please choose "Detailed Option."



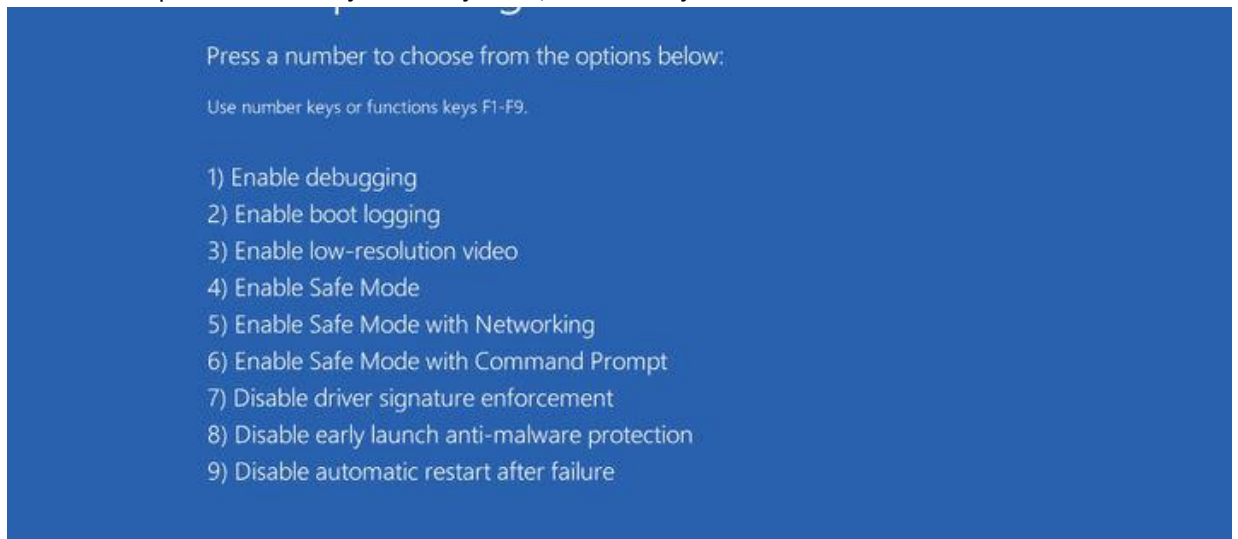
4. 5 Please choose "Startup settings"



4. 6 Please choose "Reboot."



4. 7 Please push the "7" keys of a keyboard, or "F7" key.



4. 8 Since a personal computer is rebooted, please wait for a while.

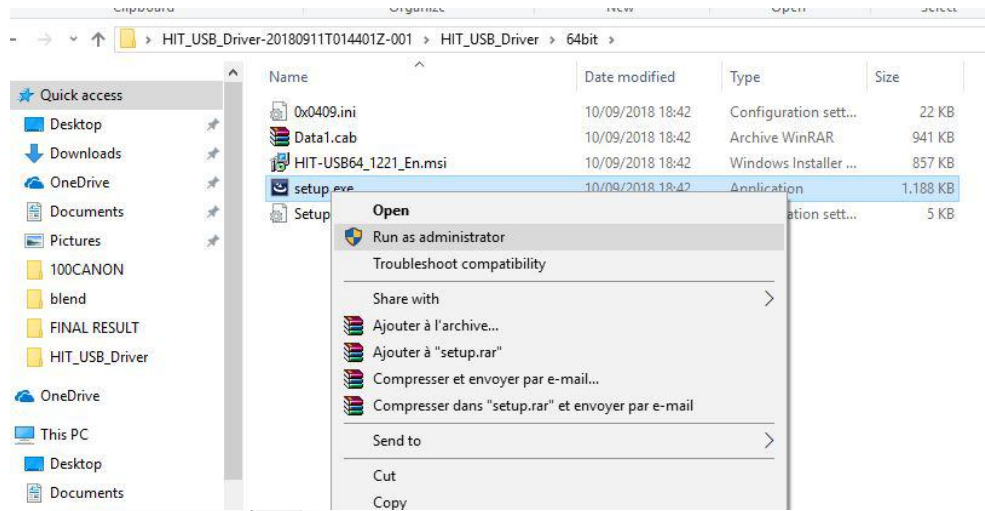
If the reboot of a personal computer finishes Please do the work from 5.



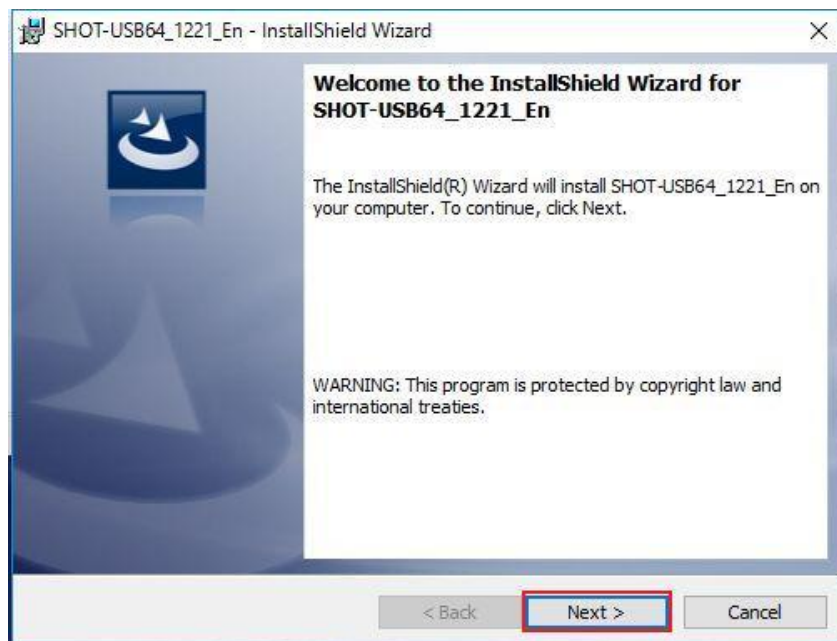
## 5. Installation of USB driver

Since a pop-up menu will be displayed if “**Setup.exe**” is chosen from the installation file of a USB driver and the right click of the mouse is carried out, please choose “**performing as an administrator.**”

※Since there are an object for 32bit and 64 bit in an installation file, please use it according to personal computer environment.



5. 1 Please do work according to the message of an installer.



SHOT-USB64\_1221\_En - InstallShield Wizard

**Customer Information**

Please enter your information.

User Name:  
sigma

Organization:

InstallShield

< Back Next > Cancel

SHOT-USB64\_1221\_En - InstallShield Wizard

**Ready to Install the Program**

The wizard is ready to begin installation.

If you want to review or change any of your installation settings, click Back. Click Cancel to exit the wizard.

Current Settings:

Setup Type:  
Typical

Destination Folder:  
C:\Program Files (x86)\SIGMA-KOKI\USB\_Driver\SHOT-USB1221\

User Information:  
Name: sigma  
Company:

InstallShield

< Back Install Cancel

SHOT-USB64\_1221\_En - InstallShield Wizard

**InstallShield Wizard Completed**

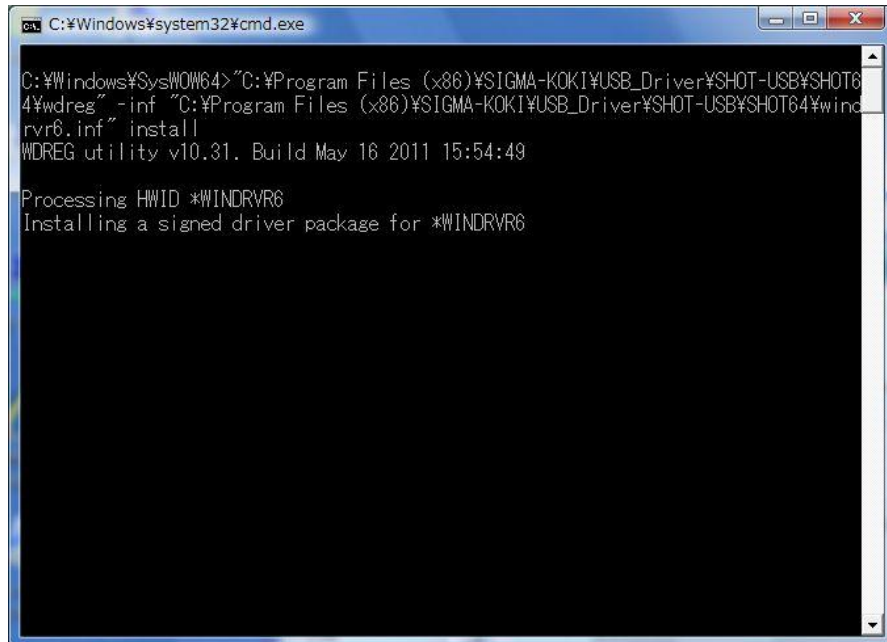
The InstallShield Wizard has successfully installed SHOT-USB64\_1221\_En. Click Finish to exit the wizard.

< Back Finish Cancel



6. Although a DOS screen is displayed in the middle of installation, please wait as it is.

※Although this case has 30 seconds – about 1 minute according to the environment of a personal computer, please wait as it is.

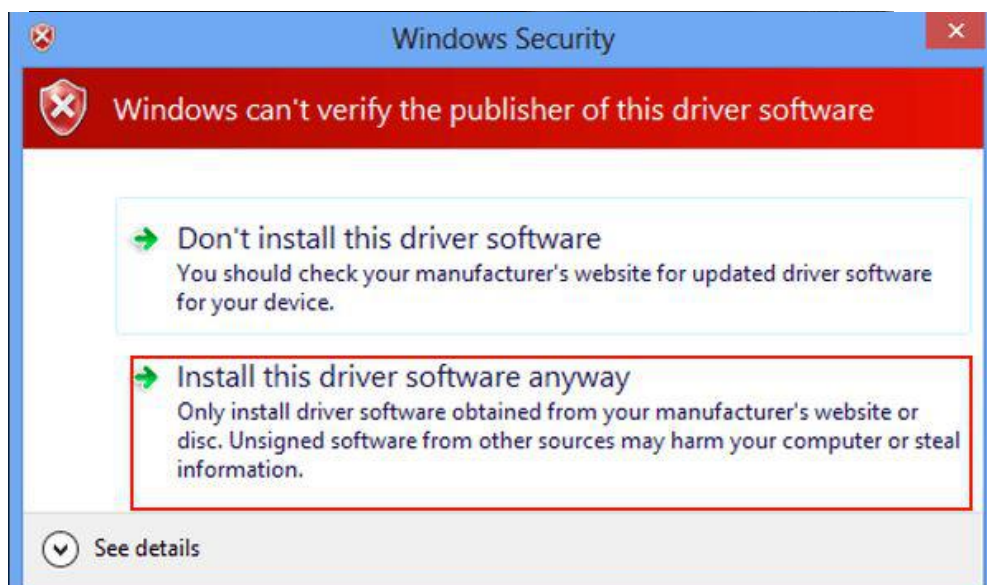


```
C:\Windows\system32\cmd.exe

C:\Windows\SysWOW64>"C:\Program Files (x86)\SIGMA-KOKI\USB_Driver\SHOT-USB\SHOT64\wdreg" -inf "C:\Program Files (x86)\SIGMA-KOKI\USB_Driver\SHOT-USB\SHOT64\windrvr6.inf" install
WDREG utility v10.31. Build May 16 2011 15:54:49

Processing HWID *WINDRV6
Installing a signed driver package for *WINDRV6
```

7. When the following screen is displayed, please choose "this driver software is installed."



※This case has time for a while until a USB driver is recognized after this.

A success of installation of a USB driver displays a driver on a "device manager."



※After the access lamp of a personal computer has put out the light after operation of 7., even when there is no response Since installation will be completed if the driver is displayed as shown in the above figure(6.) Please end, if the DOS screen is displayed.

※Please reboot a personal computer, when there is neither a case where a USB driver is not recognized correctly, nor a response.

※USB driver may be unable to be recognized in some personal computers (the UEFI environment).