

Installing USB driver (Ver 1.0a) on Windows 2000

4/2/2002, Technical center, Sigma Koki Inc.

Before installing

First, it is necessary to identify that ActiveX is installed on Windows 2000 of your PC.

Then, change the memory switch 15 INTERFACE of Mark series (202, 204) controller to USB before the installation.

(See the Mark 202, 204 User Guide)

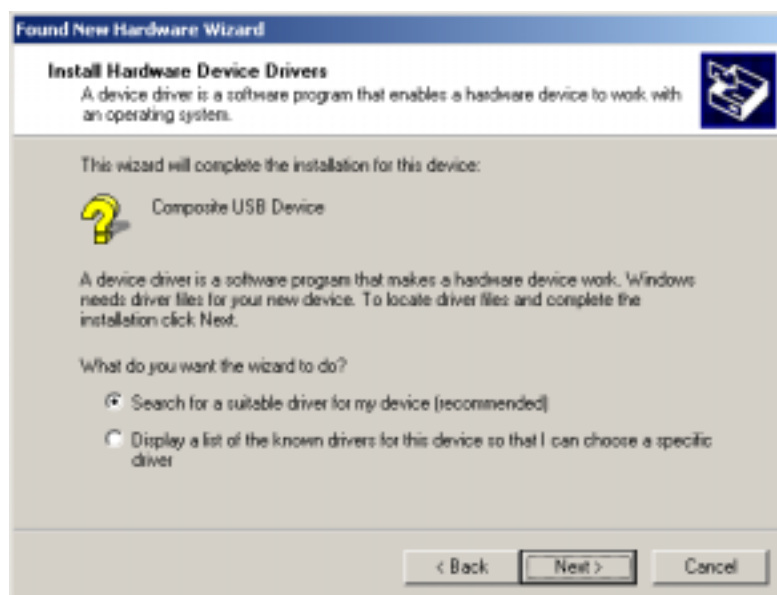
USB driver installation procedure

1. Turn on the power switch of your computer and start Windows 2000
2. Connect Mark series (202,204) controller and USB interface of your computer by the USB cable.

3. Turning on the power switch of Mark series (202,204) controller will launch the "Found New Hardware Wizard". (See the right Figure)

4. "Composite USB Device" will be identified for twice here. Complete the installation by following the instructions. (See the Figure below)

NOTES: For this device driver is not registered in the install file, USB.INF, the Plug and Play function identified the "Composite USB Device".

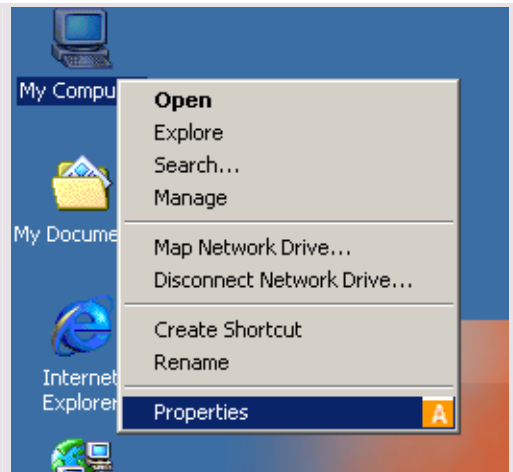


5 Change the original driver to SGUSB device driver

Right-click on the “My Computer” icon will launch the “Properties” menu bar and, then, click on “Properties”.

The “Properties” menu launched by right clicking on the “My Computer” icon.

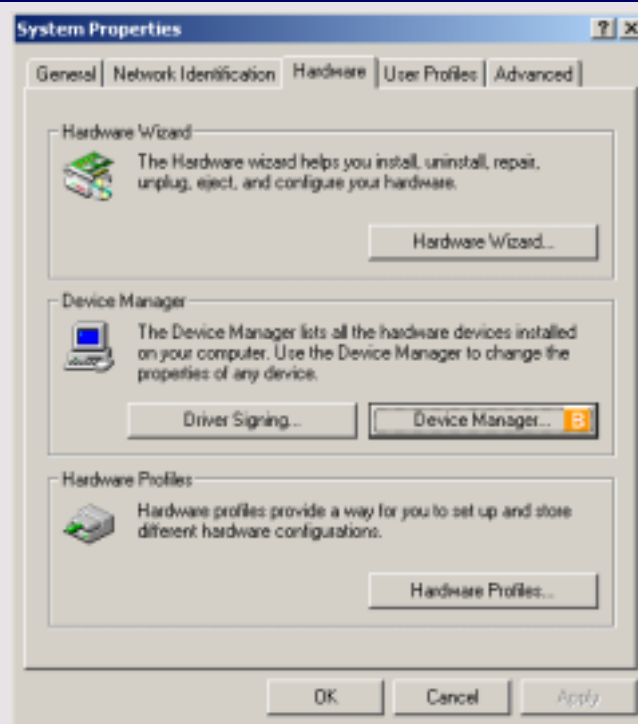
To designate the device driver manually, click on the “Properties” in the properties menu launched by right clicking on the “My Computer” icon on the desktop.



A Clicking the right mouse button will launch the pop-up menu as shown in the above figure. Then, click “Properties”. →To **A**

Then the dialog box named “System Properties” will appear. Click on the “Hardware” tab, and again, click on the “Device Manager” button in the “Device Manager” group box.

A



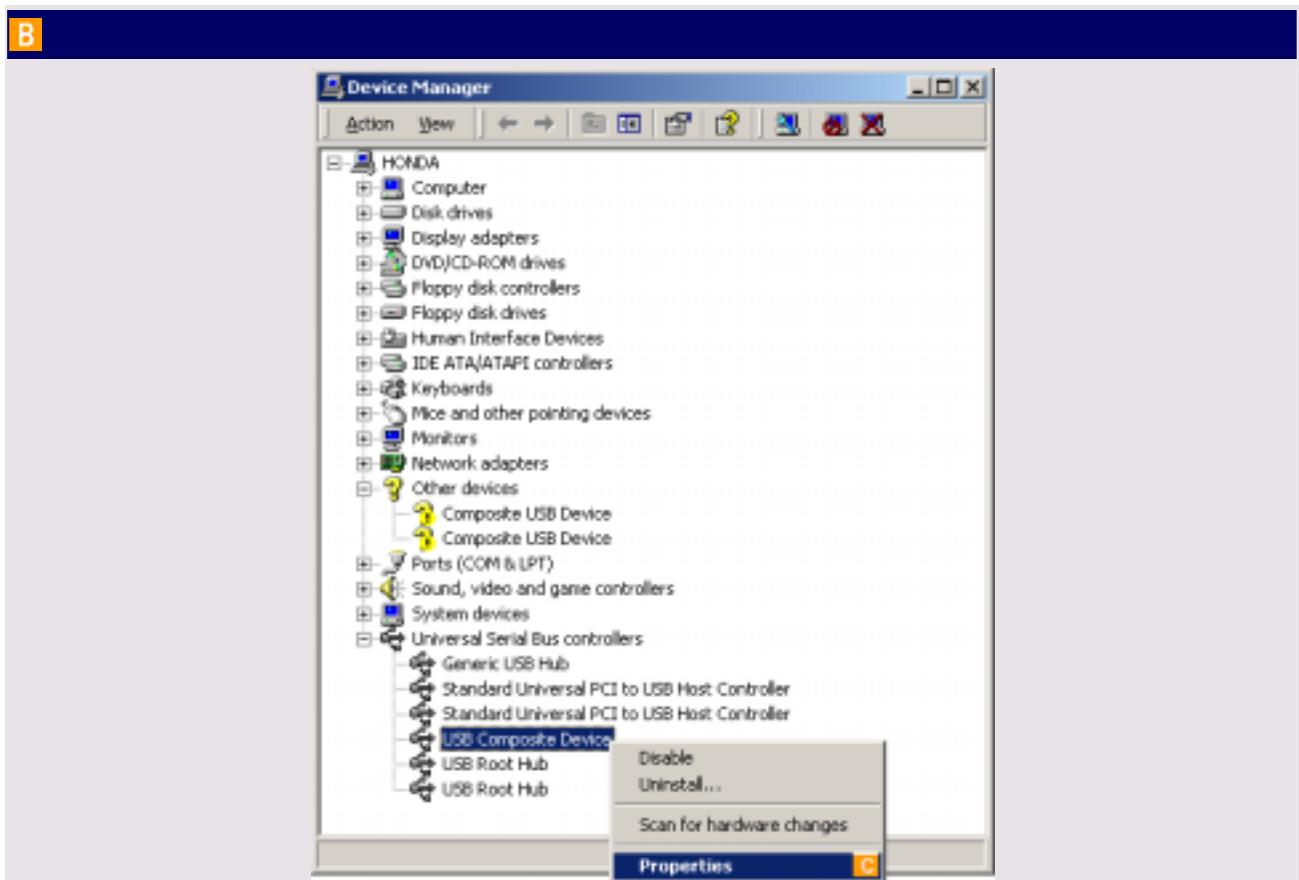
“Hardware” tab in “System Properties” dialog box

Here, you can launch the “Device Manager” which is a tool to identify the device’s situation or change the preferences of device.

B Click this button to start the “Device Manager”. →To **B**

“**Device Manager**” is a tool, which shows the list of the devices connected to the system, and, able to identify or change the preferences. We will update the device driver here this time, however, if the hardware problems have occurred later, they can be solved or specified the causes by identifying the present situation of device by the “**Device Manager**”.

Each device is tree-listed in the “**Device Manager**” as follows. Click the “+” button at the left of each item to display the detailed information related to the specified device. The screen below shows the details of the “**Universal Serial Hub controllers**” we will configure this time by the way above.

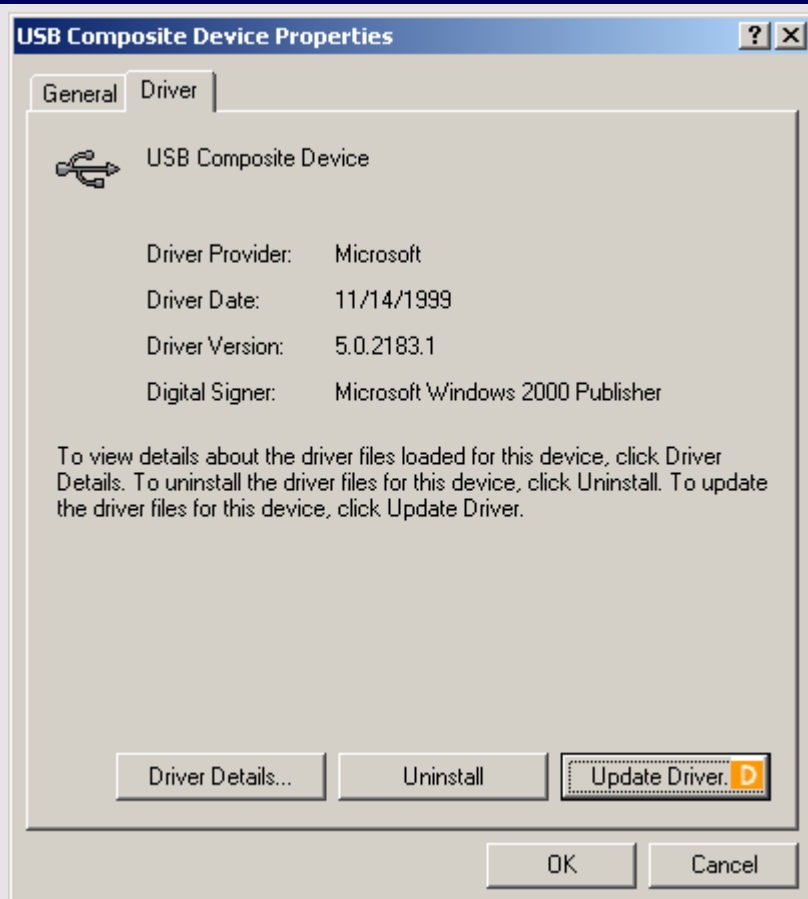


Device Manager

This device manager is a tool, which shows the list of the devices connected to the system, and able to identify or change the preferences. Although there was no tool to administrate the devices intensively as the “**Device Manager**” in NT 4.0, the same device manager for Windows 9x is added on to Windows 2000. The screen shows the details of the items in “**Universal Serial Hub controllers**” by clicking the “+” bottom on the left.

C Double-click this part to display the device properties. →To **C**

Double-clicking the item of the specified device on this device tree list will launch the “**Device Properties**” dialog box of the specified device.



“**Device Properties**” dialog box– [Driver] tag.

The detail preferences or identifications can be configured in the “**Device Properties**”. Click the “**Driver**” tag. to designate the driver manually.

D Click this button to update the device driver. →To **D**

The present situation of the device (if it is effective or is moving functionally, etc.), or the parameter preferences of each device, identification of the version of present driver, the driver upgrading, and changing of the resources used can be done in the “**Device Properties**” dialog box. Click the “**Update Driver**” button on the lower right part to designate the device driver manually.



“Upgrade Device Driver Wizard” of the device driver.

In Windows 2000, the driver upgrading comes to carry out by the wizards. In this wizard, the device is detected automatically and appropriate driver is chosen as the default setting. However, optional driver can be installed by choosing the optional designations besides the default setting.

The “Upgrade Device Driver Wizard” window as shown below will appear by clicking the “Update Driver” button. As in the installation procedure, the wizard identified the device automatically and the driver that is identified as suitable is recommended as the default setting. However, optional drivers can be located manually.

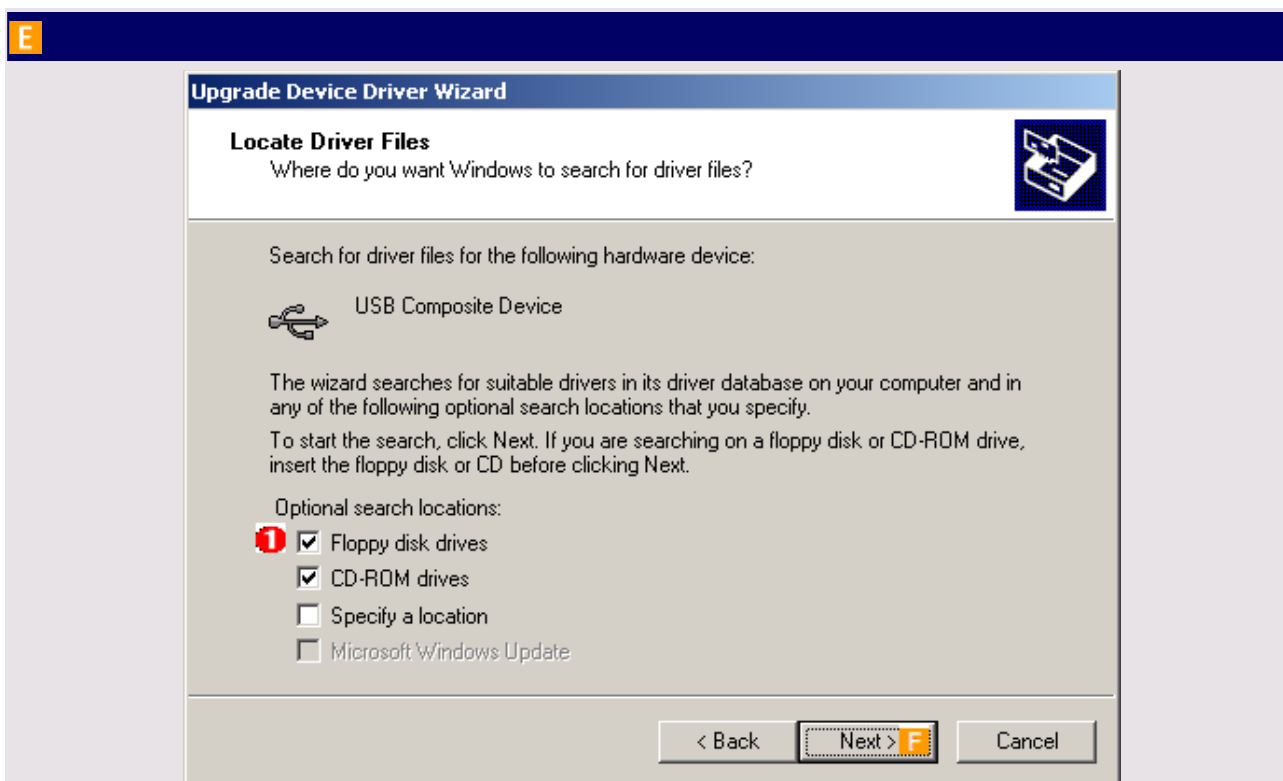


Designate the detection method of the device driver

We will designate the detection method of the device driver here. Select the [Display a list of the known drivers for this device so that I can choose a specific driver] to designate the optional driver.

1	Select this to let the wizard to detect the suitable device. (Default)
2	Select this to designate the driver manually from the database.
E	Click here to proceed to the next step. →To E

To identify the driver automatically, select the “Search for a suitable driver for my device (recommended)” and click “Next”.

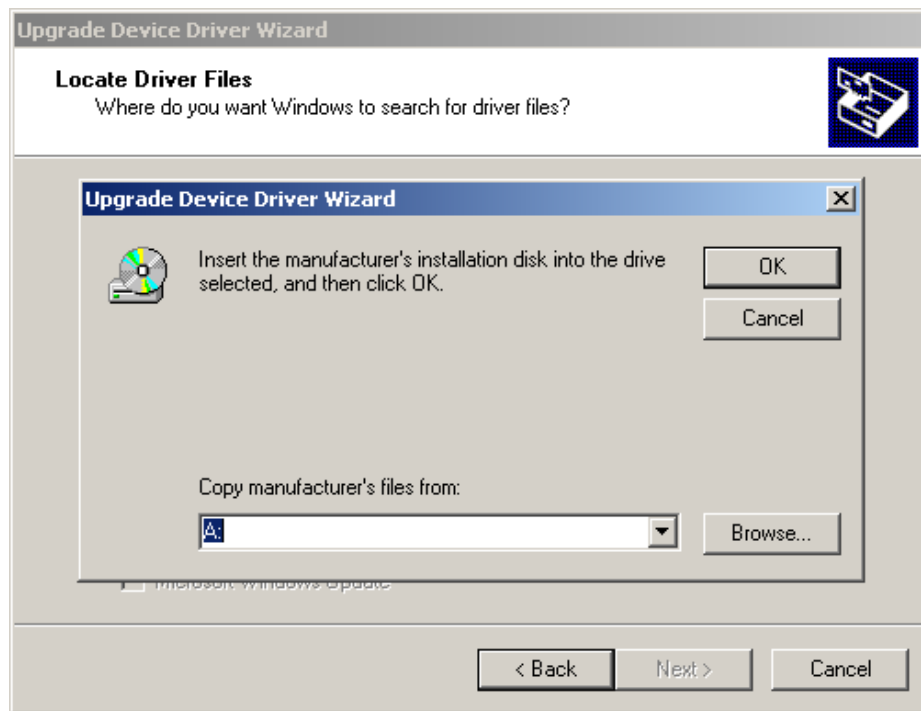


Locating driver files

Here, we will designate the location to search for the device driver. Select one of the “Optional search locations” to locate the optional media.

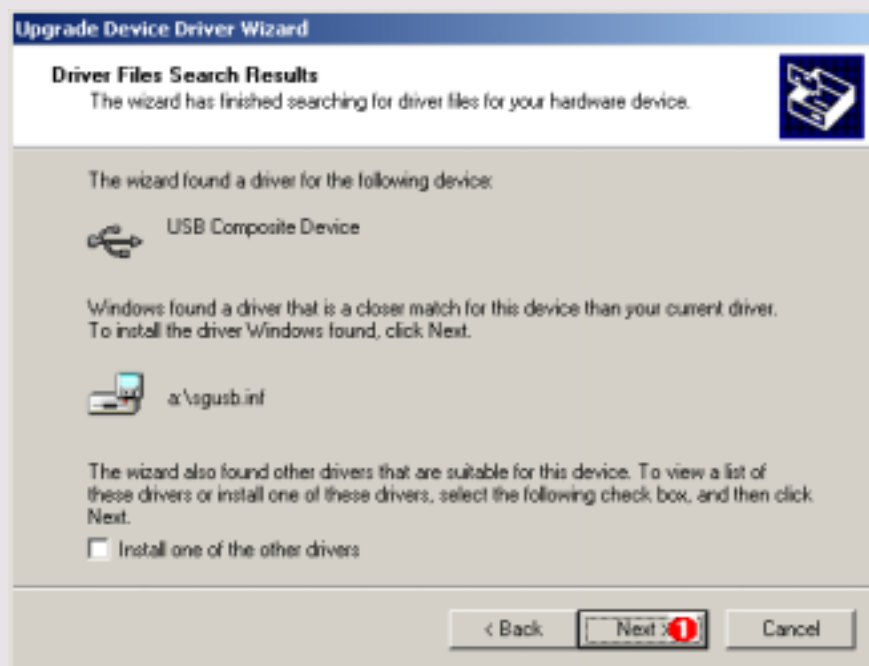
1	Select the media to search for the driver by automatic detection.
F	Click here to proceed to the next step. →To F

In “Locate Driver Files”, to identify the driver automatically, select the media to search in “Optional search locations”. Here, we will select the floppy disk drive and click “Next”.



Insert the installer disk in the Floppy drive and change [(C:) Copy manufacturer's files form:] to (A:). Searching inside the floppy disk will starts by clicking "OK".

F



Device driver searching

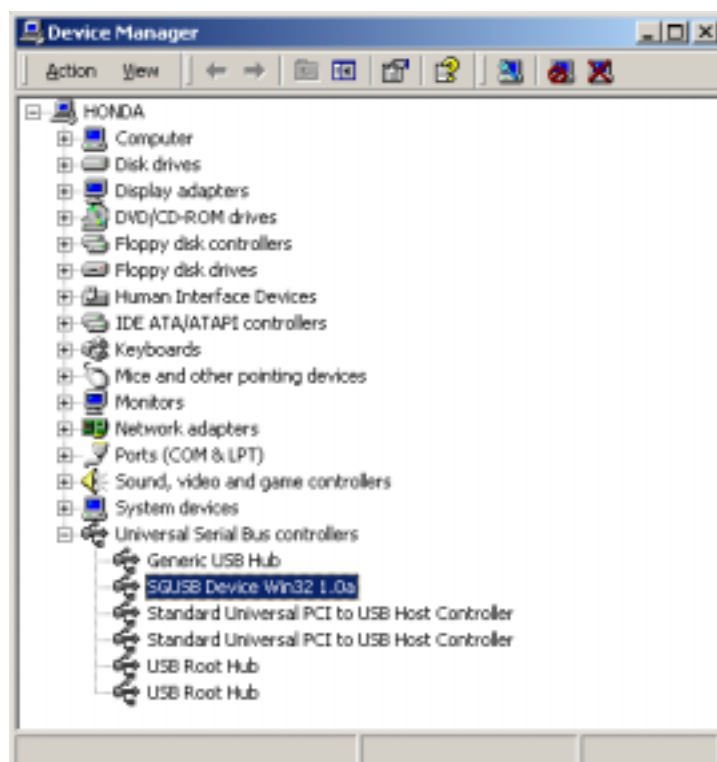
The install file will appear as shown in this screen when the current device (**Device Driver**) is detected. If the file was a suitable one for the driver, the device driver for the selected device will be chosen when **1** "Next" is clicked. Driver for Mark series will be detected in this example.

First, search the driver files inside the installer disk supported by manufacturer's hardware vendor (Sigma Koki). Install file named "a:\sgusb.inf" will appear if the current device driver is detected in the Floppy disk. If the file is a suitable one for the device, click "**Next**". Then, the driver of the detected device will be installed.

The "**Completing the Upgrade Device Driver Wizard**" as shown below will appear if the driver is chosen correctly. Then, click "**Finish**".



At the end, start the "**Device Manager**" again and check the current device driver is chosen functionally.



For more information

Please contact to the following for more information on our update service.

[Contact us by phone/fax]

Technical center, Sigma Koki Co., Ltd.

TEL: 076-274-6101

FAX: 076-274-6106

Office hours: Mon~Fri, 9:00~17:00 (Except holidays and New year)

[Contact us form home page]

Contact us from the following page.

<http://www.sigma-koki.co.jp/inquiry/index.html>

E-mail: info@sigma-koki.co.jp